

Stepwise Process Flow

Details

- **Step 1:** Prepare the Data
 - Gather geospatial data on building locations and road networks in compatible formats, such as shapefiles or geodatabases.
- **Step 2:** Overlay Data
 - Open QGIS and add the building and road network layers to your project.
 - Ensure that both layers are loaded into the Layers Panel and visible in the map view.
 - Categorize the road network layer based on road types using the "Categorized" or "Rule-based" symbology options.
- **Step 3:** Buffer Analysis (100 feet)
 - Go to the Processing Toolbox (Processing > Toolbox) to access geoprocessing tools.
 - Under "Vector geometry," find and open the "Fixed distance buffer" tool.
 - Select the road network layer as the "Input layer" and set the "Buffer distance" to 100 feet (or any desired distance).
 - Specify the output file name and location.
 - Click "Run" to create the 100-foot buffer zones around the road networks.
- **Step 4:** Identify Buildings within the 100-foot Buffer
 - Still in the Processing Toolbox, search for and open the "Intersection" tool.
 - Select the buildings layer as the "Input layer" and the buffer layer (created in Step 3) as the "Overlay layer."
 - Set the output file name and location for the intersected buildings.
 - Click "Run" to find the buildings that fall within the 100-foot buffer zones.
- **Step 5:** Buffer Analysis for Additional Distance (200 feet)
 - Repeat the same buffer process as in Step 3, but this time set the buffer distance to 200 feet (or any desired distance).
 - Create a new buffer zone around the road networks.
- **Step 6:** Identify Inaccessible Buildings
 - In the Processing Toolbox, run the "Symmetrical difference" tool.
- Select the buildings layer as the "Input layer" and the combined 100-foot and 200-foot buffer layers as the "Overlay layer."
 - This operation will identify buildings that are outside both buffer zones, which are the "Inaccessible Buildings."

Now, you should have three categories of buildings: those within 100 feet of roads, those between 100 feet and 200 feet, and those more than 200 feet away (inaccessible buildings). The results will be stored in separate layers based on your specified output file names and locations.

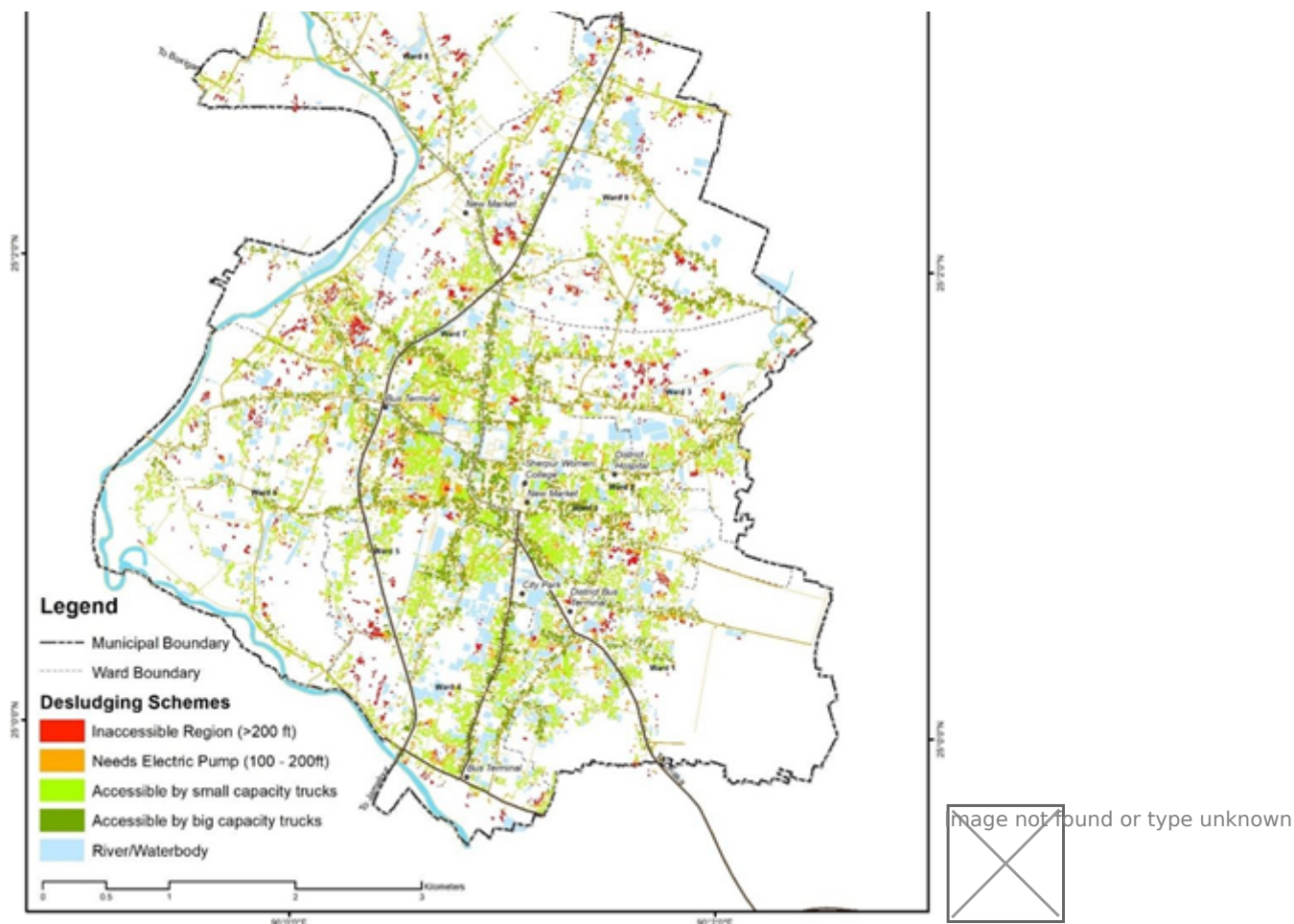


Figure 7 Illustrations of town desludging schemes based on hard-to-reach area findings, Sherpur (Bangladesh)

Source – CWIS spatial analysis, Innpack Solutions and GWSC

Revision #2

Created 21 May 2024 06:31:38

Updated 28 January 2025 05:17:37