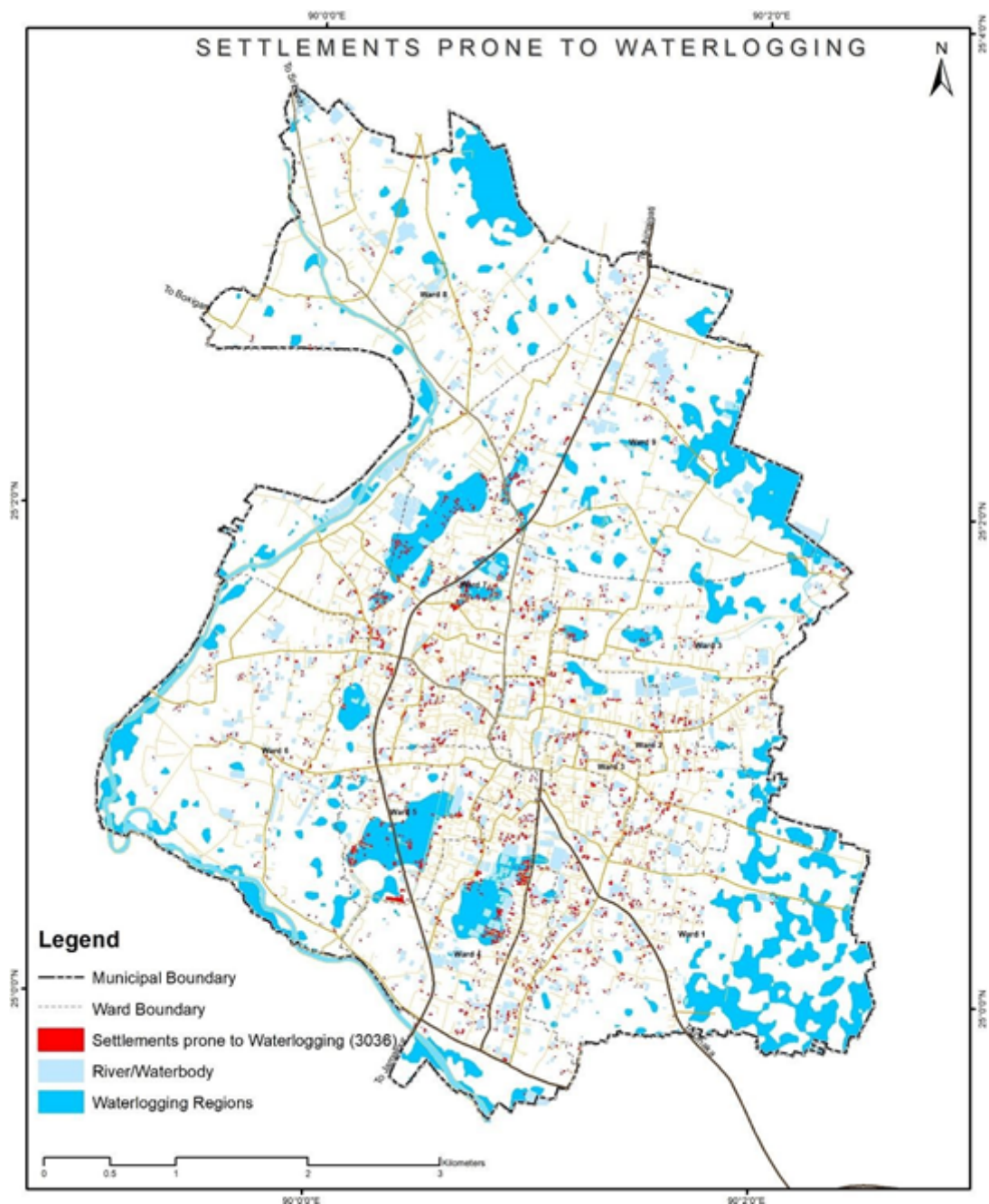


# Stepwise Process Flow

## Details

- **Step 1:** Import Data
  - Open QGIS and load your Digital Elevation Model (DEM) data representing the topography of the study area.
  - Import building data and any other relevant spatial data layers, such as rivers, flood-prone areas, and historical flood level data, if available.
- **Step 2:** Clip the Digital Elevation Model
  - Use the "Clip raster by extent" tool to clip the DEM to your study region. This tool can be found in the Processing Toolbox (Processing > Toolbox) under the GDAL > Raster extraction menu.
- **Step 3:** Reclassify the DEM
  - Utilize the "Reclassify by table" tool in the Processing Toolbox (Processing > Toolbox) under the SAGA > Raster tools menu.
  - In the tool dialog, select the clipped DEM as the input raster, and define your flood threshold values in a reclassification table (e.g., set values less than the High Flood Line (HFL) to 1 and the rest to 0).
- **Step 4:** Identify Flood-Prone Areas
  - After reclassifying the DEM, the resulting raster image will represent potential flood-prone areas, where cells with a value of 1 are susceptible to flooding.
- **Step 5:** Use Historical Flood Levels (if available)
  - If you have access to historical flood level data, repeat Steps 2 and 3 with this data to create an additional raster representing historical flood-prone areas.
- **Step 6:** Overlay Buildings
  - Add the building data to QGIS and ensure it aligns correctly with the other layers.
  - Use the "Intersect" tool in the Processing Toolbox (Vector overlay > Intersection) to overlay the buildings layer with the flood-prone areas layer. This will help identify buildings falling within the flood-prone regions.



**Figure 8 Illustrations of identifying of water logging prone settlements, Sherpur (Bangladesh)**

Source – CWIS spatial analysis, Innpac Solutions and GWSC

Revision #3

Created 21 May 2024 06:39:49

Updated 28 January 2025 05:17:37