

9.2.3 Add Containment to Building

When the user intends to make changes to the building details (edit), by clicking on **edit** button, user will be given an option to Add Containment to Building.

Containment Information

Add Containment to Building

Show 10 entries

Search:

Containment ID	Containment Type	Containment Volume (m³)	Containment Location	Actions
C000072	Double Pit	1.57	Outside the house	<div><div></div><div></div><div></div><div></div></div>

Showing 1 to 1 of 1 entries

Previous

1

Next

- The user will then be allowed to add new containment information to existing buildings.

Containment Information

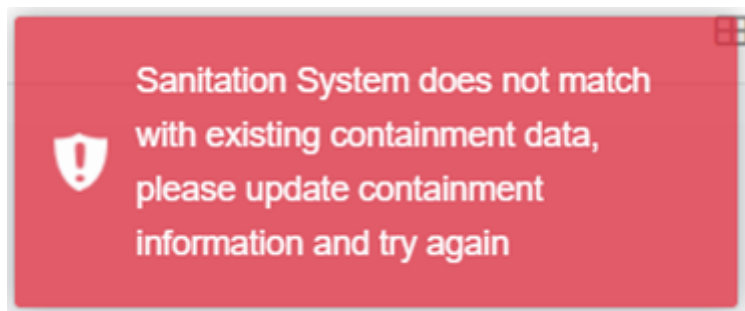
Containment Type*	<div>Containment Type</div>
Tank Length (m)	<div>Tank Length (m)</div>
Tank Width (m)	<div>Tank Width (m)</div>
Tank Depth (m)	<div>Tank Depth (m)</div>
Containment Volume (m³)*	<div>Containment Volume (m³)(Enter Dimensions to auto calculate)</div>
Containment Location	<div>Containment Location</div>
Septic Tank Standard Compliance	<div>Septic Tank Standard Compliance</div>
Containment Construction Date	<div>mm/dd/yyyy</div>
Building Footprint (KML File)*	<div><div>Choose File</div>No file chosen (KML File size should not be more than 1MB)</div>
House Image	<div><div>Choose File</div>No file chosen (Image (JPG,JPEG) size should not be more than 5MB)</div>

- The form fields of the add containment are the same as the above-explained containment information in the form fields of the add building (refer to section 9.2.2 Add Building).
- The user can also **edit** the containment information from the building edit page by simply clicking the edit button, which redirects to the edit containment page.
- If the user attempts to modify the sanitation system technology and the system encounters different containment information, the system will not allow the user to change the containment details directly. The user must update the appropriate containment information (delete containment connection, edit containment type), and then modify the sanitation system technology.
- When editing the building data, if a user attempts to delete the connection between the building and the containment, the following conditions must be met:
 1. If the containment has application data with an "Emptying Status" of False, the connection to the building cannot be deleted.
 2. If the application data is emptied, meaning the "Emptying Status" is True, the connection between the building and the containment can be deleted. In this case:

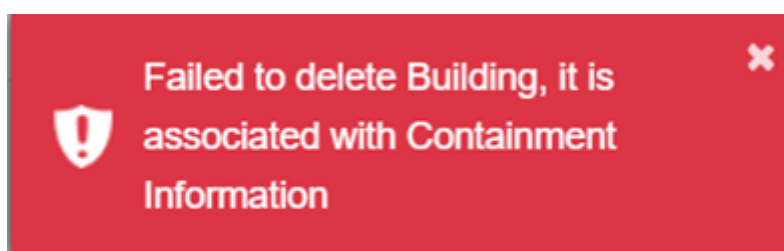
§ If the containment has a single connection to the building, it will be completely deleted.

§ If the containment has multiple connections (for example, a Septic Tank connected to both a Sewer Network and a Drain Network), only the connection to the building will be removed, and the Sewer Code or Drain Code for that containment will be nullified if the containment has outlet connections.

- Additionally, new containment information/ connection can also be carried out as per the requirements. Example: If the user initially has the sanitation system set to Sewer network and needs to add containment information, the user should click the '**Add Containment to Buildings**' button, fill out the required fields, and click '**Save**'. This will dynamically update the Sanitation System and add the containment information. The error message below is displayed if the user attempts to add a different containment to the existing one:



- For the deletion of either building or containment data, If the building has no connection with the containment, user can easily delete the building data, if it has the connection with the containment user must follow the below steps:
 - Step1: To completely remove the building data, first user must remove the connection between the building and containment. This can be accomplished by clicking on the “**View Containments Connected to Building**” button. Upon selecting the **details** button, the user will be redirected to the containment details where user can proceed to delete the specific containment associated with the same building.
 - Step 2: If the user attempts to delete building or containment data without removing the connection between the building and containment, the system will notify the user with an error message as:



Revision #2

Created 3 February 2025 09:29:59 by Bookstack Editor

Updated 6 February 2025 07:31:28 by Kabin