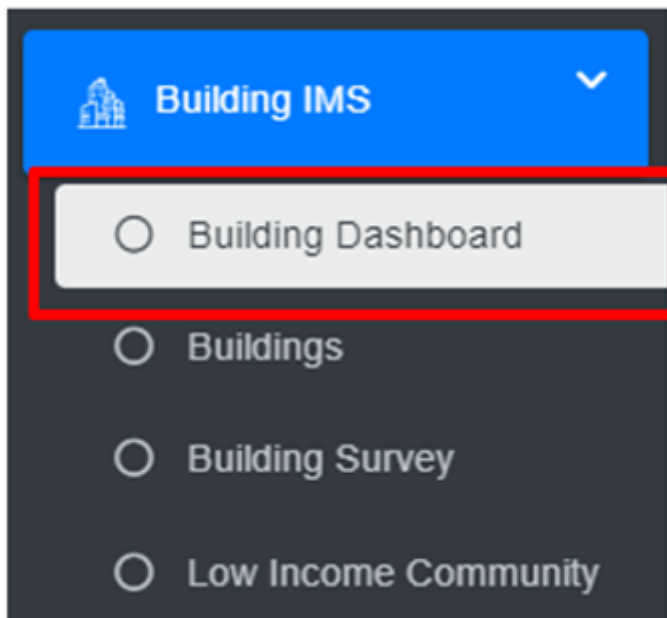


9.1 Building Information Dashboard

9.1.1 Navigating to Building Information Dashboard

- Open the sidebar and click on **Building IMS** to expand.
- Select **Building Dashboard**.



Overview:

- The Building Information Dashboard provides a quick synopsis of the information maintained in this module. The count boxes provide a glance at the status of different buildings, and sanitation systems, and the charts provide a graphical representation of the information.
- The user can interact with the chart's tools (refer to section 6.8 Chart Card Tools).
- While hovering over the charts, it provides further information.

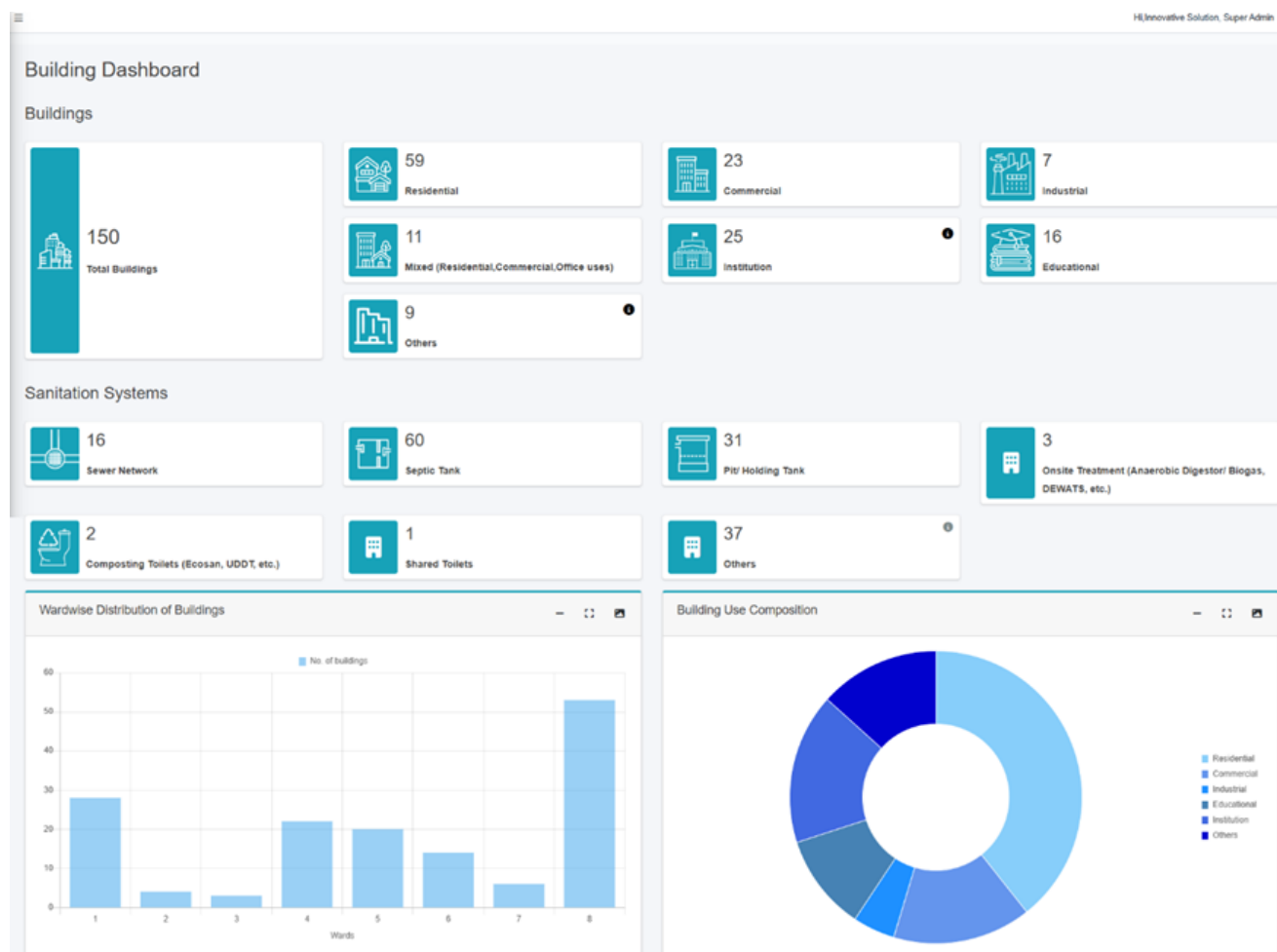


Figure 9- 1 Building Dashboard

Revision #1

Created 3 February 2025 09:26:07 by Bookstack Editor

Updated 6 February 2025 07:31:28 by Bookstack Editor